

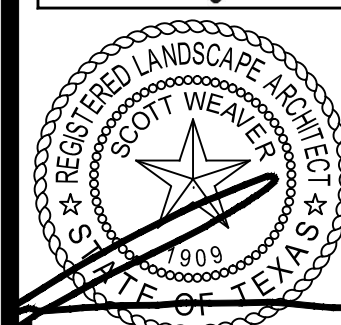
- LEGEND**
- (○) TREES TO BE PRESERVED
 - (⊗) TREES TO BE REMOVED
 - (▨) DENOTES PARKING LOT AREA

| No. | REVISIONS | BY |
|-----|-----------------|----|
| 1 | review comments | |
| 2 | review comments | |

GMS ARCHITECTS

1150 Paredes Line Rd.
Brownsville TX 78526
(956) 546-0110
fax (956) 546-0196

IDEA PUBLIC SCHOOLS
HIDDEN MEADOWS PHASE 2
SAN ANTONIO, TEXAS



| | |
|--------------------|------------------------|
| Date: | 05/20/21 |
| Scale: | As Noted |
| Project Architect: | Roan Gomez, AIA |
| Drawn By: | sw |
| Job No.: | IDEA Phase 2 |
| Sheet: | TREE PRESERVATION PLAN |

LTP 1.1

WEAYER DESIGN STUDIO, LLC.
13750 San Pedro, Suite 643
San Antonio, Texas 78232
Tel 210.273.3541
www.wds-la.com

NOTE:
REFERENCE SHEET LTP 21 FOR TREE
PRESERVATION NOTES AND DETAILS

| 100YR FLOODPLAIN TREE INVENTORY | | | | | | | | | | | | | | | |
|--|------|-----------|------|-------------------------------------|-----------|--------------------------------|-----------|-------------------------------------|-----------|------------------------------|-----------|--------------|-----------|---|---|
| | | | | Understory Species* 5.0" - 11.5" | | Significant Tree 6" - 23.5" | | Significant Tree** 10.0" - 23.5" | | Heritage 3:1 | | Heritage 1:1 | | Additional Inches Preserved for Mitigation *** | |
| Tag # | Size | Species | Code | Removed | Preserved | Removed | Preserved | Removed | Preserved | Removed | Preserved | Removed | Preserved | Preserved | |
| 4 | 12 | Hackberry | p | | | | | | 12 | | | | | | |
| 5 | 13 | Mesquite | p | | | | | | 13 | | | | | | |
| 35 | 10 | Mesquite | p | | | | | | 10 | | | | | | |
| 48 | 14 | Elm | r | | | 14 | | | | | | | | | |
| 49 | 8 | Gum | p | | | | 8 | | | | | | | | |
| 50 | 6 | Gum | r | | | 6 | | | | | | | | | |
| 57 | 7 | Gum | d | | | | | | | | | | | | |
| 62 | 10 | Hackberry | p | | | | | | 10 | | | | | | |
| 63 | 11 | Elm | p | | | | 11 | | | | | | | | |
| 1019 | 16 | Hackberry | p | | | | | | 16 | | | | | | |
| 1020 | 9 | Elm | p | | | | 9 | | | | | | | | |
| 1021 | 12 | Hackberry | p | | | | | | 12 | | | | | | |
| 1022 | 11 | Hackberry | p | | | | | | 11 | | | | | | |
| 1023 | 10 | Hackberry | p | | | | | | 10 | | | | | | |
| 1024 | 11 | Hackberry | p | | | | | | 11 | | | | | | |
| 1025 | 15 | Hackberry | p | | | | | | 15 | | | | | | |
| 1026 | 11 | Hackberry | p | | | | | | 11 | | | | | | |
| 1027 | 14 | Hackberry | p | | | | | | 14 | | | | | | |
| 1028 | 10 | Hackberry | p | | | | | | 10 | | | | | | |
| 1029 | 16 | Hackberry | p | | | | | | 16 | | | | | | |
| 1030 | 15 | Hackberry | p | | | | | | 15 | | | | | | |
| 1031 | 12 | Hackberry | p | | | | | | 12 | | | | | | |
| 1032 | 8 | Elm | p | | | | 8 | | | | | | | | |
| 1033 | 9 | Elm | p | | | | 9 | | | | | | | | |
| 1034 | 8 | Elm | p | | | | 8 | | | | | | | | |
| 1035 | 11 | Elm | p | | | | 11 | | | | | | | | |
| 1036 | 13 | Hackberry | p | | | | | | 13 | | | | | | |
| 1037 | 12 | Hackberry | p | | | | | | 12 | | | | | | |
| 1038 | 10 | Elm | p | | | | 10 | | | | | | | | |
| 1039 | 8 | Elm | p | | | | 8 | | | | | | | | |
| 1040 | 8 | Elm | p | | | | 8 | | | | | | | | |
| 1041 | 7 | Elm | p | | | | 7 | | | | | | | | |
| 1042 | 11 | Hackberry | p | | | | | | 11 | | | | | | |
| 1043 | 13 | Hackberry | p | | | | | | 13 | | | | | | |
| 1044 | 10 | Hackberry | p | | | | | | 10 | | | | | | |
| 1045 | 12 | Hackberry | p | | | | | | 12 | | | | | | |
| 1046 | 14 | Hackberry | p | | | | | | 14 | | | | | | |
| 1047 | 13 | Hackberry | p | | | | | | 13 | | | | | | |
| 1048 | 13 | Hackberry | p | | | | | | 13 | | | | | | |
| 1049 | 14 | Elm | p | | | | 14 | | | | | | | | |
| 1050 | 7 | Elm | p | | | | 7 | | | | | | | | |
| 1051 | 9 | Elm | p | | | | 9 | | | | | | | | |
| 1052 | 9 | Elm | p | | | | 9 | | | | | | | | |
| 1053 | 8 | Elm | p | | | | 8 | | | | | | | | |
| 1054 | 14 | Elm | p | | | | 14 | | | | | | | | |
| 1055 | 16 | Elm | p | | | | 16 | | | | | | | | |
| 1056 | 15 | Elm | p | | | | 15 | | | | | | | | |
| 1057 | 7 | Gum | p | | | | 7 | | | | | | | | |
| 1058 | 11 | Elm | p | | | | 11 | | | | | | | | |
| 1059 | 10 | Elm | p | | | | 10 | | | | | | | | |
| 1092 | 12 | Hackberry | p | | | | | | 12 | | | | | | |
| 1093 | 11 | Hackberry | p | | | | | | 11 | | | | | | |
| 1094 | 13 | Hackberry | p | | | | | | 13 | | | | | | |
| 1095 | 10 | Hackberry | p | | | | | | 10 | | | | | | |
| 1096 | 12 | Elm | p | | | | 12 | | | | | | | | |
| 1097 | 7 | Elm | p | | | | 7 | | | | | | | | |
| 1098 | 7 | Elm | p | | | | 7 | | | | | | | | |
| 36 | 21 | Mesquite | r | | | | | 21 | | | | | | | |
| 37 | 10 | Hackberry | r | | | | | 10 | | | | | | | |
| 38 | 12 | Hackberry | r | | | | | 12 | | | | | | | |
| 39 | 15 | Hackberry | r | | | | | 15 | | | | | | | |
| 51 | 14 | Gum | r | | | | | | | | | | | | |
| 53 | 10 | Mesquite | r | | | | | 10 | | | | | | | |
| 54 | 7 | Persimmon | r | 7 | | | | | | | | | | | |
| 55 | 11 | Mesquite | r | | | | | 11 | | | | | | | |
| 56 | 14 | Mesquite | r | | | | | 14 | | | | | | | |
| Sub. Tot. Inches= | | | | 7 | 0 | 20 | 254 | 93 | 355 | 0 | 0 | 0 | 0 | 0 | |
| | | | | 7 | | | 274 | | 448 | | 0 | | 0 | | |
| Total inches by category= | | | | | | | | | | | | | | | |
| Preservation percentage= | | | | 0% | | Significant Preservation | | 84% | | Heritage Preservation | | #DIV/0! | | #REF! | |
| Mitigation required (Commercial) = | | | | 5.6 | | Commercial (inches) | | -31.4 | | | | | | | |
| Mitigation required (Residential) = | | | | 5.6 | | Residential (inches) | | -31.4 | | Heritage Mitigation (inches) | | | | | 0 |
| No category to fall below 20% preservation; | | | | | | | | | | | | | | | |
| Preserved- Tree to remain that meets root protection zone requirements described in section 35-523 of the UDC. | | | | | | | | | | | | | | | |
| Mitigation 1:1 for significant trees below minimum preservation requirements; 3:1 for heritage trees below 100% preservation | | | | | | | | | | | | | | | |
| * Small species: Condalia, Redbud, Tx. Mountain Laurel, Tx. Persimmon, Hawthorn, Possumhaw - these are mitigated at 1:1 for Heritage Trees | | | | | | | | | | | | | | | |
| ** Ashe Juniper, Huisache, Mesquite, Arizona Ash, Hackberry protected at 10" dbh and mitigated at 1:1 for heritage trees | | | | | | | | | | | | | | | |
| *** Mitigation Trees: Unprotected-sized trees to be used for mitigation calculations; subtract inches from mitigation owed | | | | | | | | | | | | | | | |

| ENVIRONMENTALLY SENSITIVE TREE INVENTORY | | | | | | | | | | | | | | |
|--|------|-----------------|------|-------------------------------------|-----------|--------------------------------|--------------------------|-------------------------------------|-----------|------------------------------|-----------|--------------|-----------|---|
| Tag # | Size | Species | Code | Understory Species* 5.0" - 11.5" | | Significant Tree 6" - 23.5" | | Significant Tree** 10.0" - 23.5" | | Heritage 3:1 | | Heritage 1:1 | | Additional Inches Preserved for Mitigation *** |
| | | | | Removed | Preserved | Removed | Preserved | Removed | Preserved | Removed | Preserved | Removed | Preserved | |
| 17 | 10 | Mesquite | PR | | | | | | | | | | | |
| 18 | 13 | Hackberry | PR | | | | | | | | | | | |
| 46 | 14 | Mesquite | R | | | | | 14 | | | | | | |
| 47 | 9 | Elm | R | | | | 9 | | | | | | | |
| 58 | 11 | Mesquite (dead) | d | | | | | | | | | | | |
| 59 | 11 | Mesquite | R | | | | | 11 | | | | | | |
| 2001 | 16 | Mesquite | R | | | | | 16 | | | | | | |
| 2002 | 3 | oak | R | | | | | | | | | | | |
| 2003 | 3 | oak | R | | | | | | | | | | | |
| 2004 | 3 | oak | R | | | | | | | | | | | |
| 2005 | 3 | oak | R | | | | | | | | | | | |
| 2006 | 3 | oak | P | | | | | | | | | | | 3 |
| 2007 | 3 | oak | P | | | | | | | | | | | 3 |
| 2008 | 3 | oak | P | | | | | | | | | | | 3 |
| 2009 | 3 | oak | P | | | | | | | | | | | 3 |
| Sub. Tot. Inches= | | | | | 0 | 0 | 9 | 0 | 41 | 0 | 0 | 0 | 0 | 12 |
| Total inches by category= | | | | | | 0 | | | 41 | | 0 | | 0 | |
| Preservation percentage= | | | | | | #DIV/0! | Significant Preservation | | 0% | Heritage Preservation | | #DIV/0! | #REF! | |
| Mitigation required (Commercial) = | | | | | | 0 | Commercial (inches) | | 62 | | | | | |
| Mitigation required (Residential) = | | | | | | 0 | Residential (inches) | | 40 | Heritage Mitigation (inches) | | 0 | | |

| UPLANDTREE INVENTORY | | | | | | | | | | | | | | |
|--|------|-----------|------|-------------------------------------|-----------|--------------------------------|-----------|-------------------------------------|-----------|------------------------------|-----------|--------------|-----------|---|
| | | | | Understory Species* 5.0" - 11.5" | | Significant Tree 6" - 23.5" | | Significant Tree** 10.0" - 23.5" | | Heritage 3:1 | | Heritage 1:1 | | Additional Inches Preserved for Mitigation *** |
| Tag # | Size | Species | Code | Removed | Preserved | Removed | Preserved | Removed | Preserved | Removed | Preserved | Removed | Preserved | Preserved |
| 1 | 11 | Hackberry | e | | | | | | | | | | | |
| 2 | 11 | Hackberry | e | | | | | | | | | | | |
| 3 | 11 | Mesquite | e | | | | | | | | | | | |
| 6 | 15 | Mesquite | r | | | | | 15 | | | | | | |
| 7 | 13 | Mesquite | r | | | | | 13 | | | | | | |
| 8 | 5 | Persimmon | r | 5 | | | | | | | | | | |
| 9 | 16 | Mesquite | r | | | | | 16 | | | | | | |
| 10 | 17 | Mesquite | r | | | | | 17 | | | | | | |
| 11 | 15 | Mesquite | r | | | | | 15 | | | | | | |
| 12 | 14 | Mesquite | r | | | | | 14 | | | | | | |
| 13 | 7 | Persimmon | r | 7 | | | | | | | | | | |
| 17 | 10 | Mesquite | r | | | | | 10 | | | | | | |
| 18 | 13 | Hackberry | r | | | | | 13 | | | | | | |
| 19 | 11 | Hackberry | r | | | | | 11 | | | | | | |
| 20 | 11 | Mesquite | r | | | | | 11 | | | | | | |
| 21 | 20 | Mesquite | r | | | | | 20 | | | | | | |
| 22 | 12 | Hackberry | r | | | | | 12 | | | | | | |
| 23 | 12 | Mesquite | r | | | | | 12 | | | | | | |
| 24 | 13 | Mesquite | r | | | | | 13 | | | | | | |
| 27 | 14 | Mesquite | r | | | | | 14 | | | | | | |
| 28 | 13 | Hackberry | r | | | | | 13 | | | | | | |
| 42 | 13 | Hackberry | r | | | | | 13 | | | | | | |
| 43 | 13 | Mesquite | r | | | | | 13 | | | | | | |
| 44 | 11 | Mesquite | r | | | | | 11 | | | | | | |
| 45 | 10 | Mesquite | r | | | | | 10 | | | | | | |
| 60 | 11 | Mesquite | r | | | | | 11 | | | | | | |
| 61 | 12 | Mesquite | r | | | | | 12 | | | | | | |
| 1001 | 19 | Hackberry | e | | | | | | | | | | | |
| 1002 | 12 | Mesquite | r | | | | | 12 | | | | | | |
| 1003 | 13 | Mesquite | r | | | | | 13 | | | | | | |
| 1004 | 11 | Mesquite | r | | | | | 11 | | | | | | |
| 1005 | 12 | Mesquite | r | | | | | 12 | | | | | | |
| 1006 | 12 | Mesquite | r | | | | | 12 | | | | | | |
| 1007 | 16 | Mesquite | r | | | | | 16 | | | | | | |
| 1008 | 12 | Mesquite | r | | | | | 12 | | | | | | |
| 1009 | 11 | Mesquite | r | | | | | 11 | | | | | | |
| 1010 | 21 | Mesquite | r | | | | | 21 | | | | | | |
| 1011 | 14 | Mesquite | r | | | | | 14 | | | | | | |
| 1012 | 11 | Mesquite | r | | | | | 11 | | | | | | |
| 1013 | 10 | Mesquite | r | | | | | 10 | | | | | | |
| 1014 | 14 | Mesquite | r | | | | | 14 | | | | | | |
| 1015 | 16 | Hackberry | r | | | | | 16 | | | | | | |
| 1016 | 10 | Pecan | | | | 10 | | | | | | | | |
| 1017 | 10 | Hackberry | r | | | | | 10 | | | | | | |
| 1018 | 23 | Mesquite | r | | | | | | | | | | | |
| 14 | 17 | Mesquite | r | | | | | 17 | | | | | | |
| 15 | 6 | Persimmon | r | | | | | | | | | | | |
| 16 | 18 | Mesquite | r | | | | | 18 | | | | | | |
| Sub. Tot. Inches= | | | | 17 | 0 | 10 | 0 | 519 | 0 | 0 | 0 | 0 | 0 | 0 |
| Total inches by category= | | | | 17 | | 10 | | | 519 | | 0 | | 0 | |
| Preservation percentage= | | | | 0% | | Significant Preservation | | 0% | | Heritage Preservation | | #DIV/0! | | #REF! |
| Mitigation required (Commercial) = | | | | 6.8 | | Commercial (inches) | | 211.6 | | Heritage Mitigation (inches) | | 0 | | |
| Mitigation required (Residential) = | | | | | | Residential (inches) | | 185.15 | | | | | | |
| No category to fall below 20% preservation; | | | | | | | | | | | | | | |
| Preservation of Tree to remain that meets root protection zone requirements described in section 35-523 of the UDC | | | | | | | | | | | | | | |
| Mitigation 1:1 for significant trees below minimum preservation requirements; 3:1 for heritage trees below 100% preservation | | | | | | | | | | | | | | |
| * Small species: Condalia, Redbud, Tx. Mountain Laurel, Tx. Persimmon, Hawthorn, Possumhaw - these are mitigated at 1:1 for Heritage Trees | | | | | | | | | | | | | | |
| ** Ashe Juniper, Huisache, Mesquite, Arizona Ash, Hackberry protected at 10" doh and mitigated at 1:1 for heritage trees | | | | | | | | | | | | | | |
| *** Mitigation Trees: Unprotected-sized trees to be used for mitigation calculations; subtract inches from mitigation owed | | | | | | | | | | | | | | |

TREE PRESERVATION ORDINANCE:

UPLAND AREA:

LARGE SPECIES

| | |
|---------------------------------|----------------------|
| TOTAL INCHES LARGE SPECIES: | 544" |
| TOTAL REQUIRED INCHES: | 544" X 40% = 219.6" |
| TOTAL LARGE SPECIES PRESERVED: | 0" |
| TOTAL LARGE SPECIES REMOVED: | 544" |
| TOTAL LARGE SPECIES MITIGATION: | 219.6" - 0" = 219.6" |

SMALL SPECIES

| | |
|---------------------------------|------------------|
| TOTAL INCHES SMALL SPECIES: | 17" |
| TOTAL REQUIRED INCHES: | 17" X 40% = 6.8" |
| TOTAL SMALL SPECIES PRESERVED: | 0" |
| TOTAL SMALL SPECIES REMOVED: | 17" |
| TOTAL SMALL SPECIES MITIGATION: | 6.8" - 0" = 6.8" |

ENVIRONMENTALLY SENSITIVE AREA (ESA):

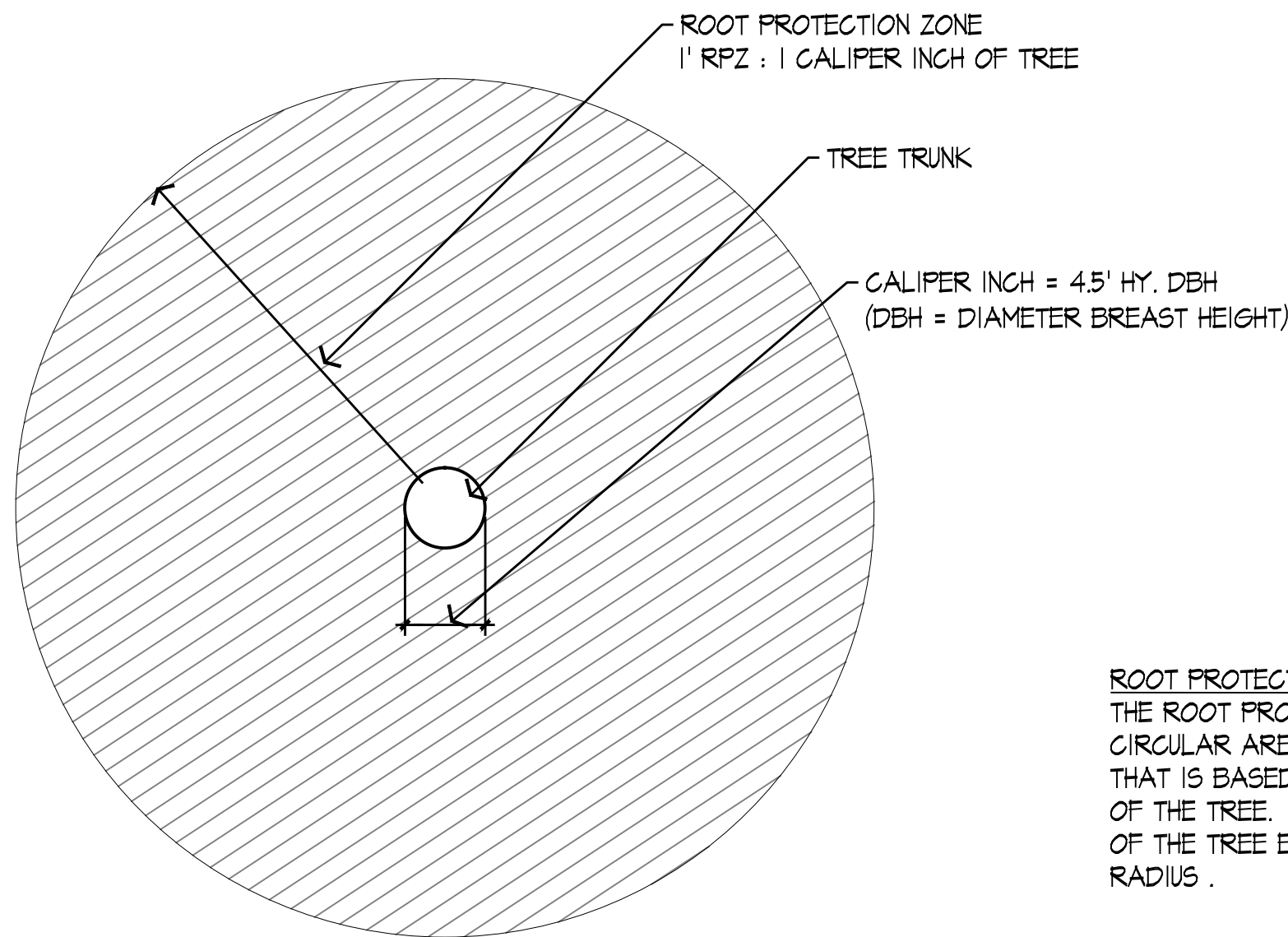
| | |
|--|-----------------------|
| TOTAL INCHES ESA: | 73" |
| TOTAL TREES REMOVED AND MITIGATED FOR IN PHASE I (#1, #8) | 23" |
| 4 NEWLY PLANTED MITIGATION TREES FROM PHASE I TO BE REPLACED (WITHIN THE ESA): | 12" |
| TOTAL REQUIRED INCHES AT 100%: | 73" - 23" + 12" = 62" |
| | 62" X 100% = 62" |

TOTAL INCHES MITIGATION PROVIDED TO REPLACE 100%:

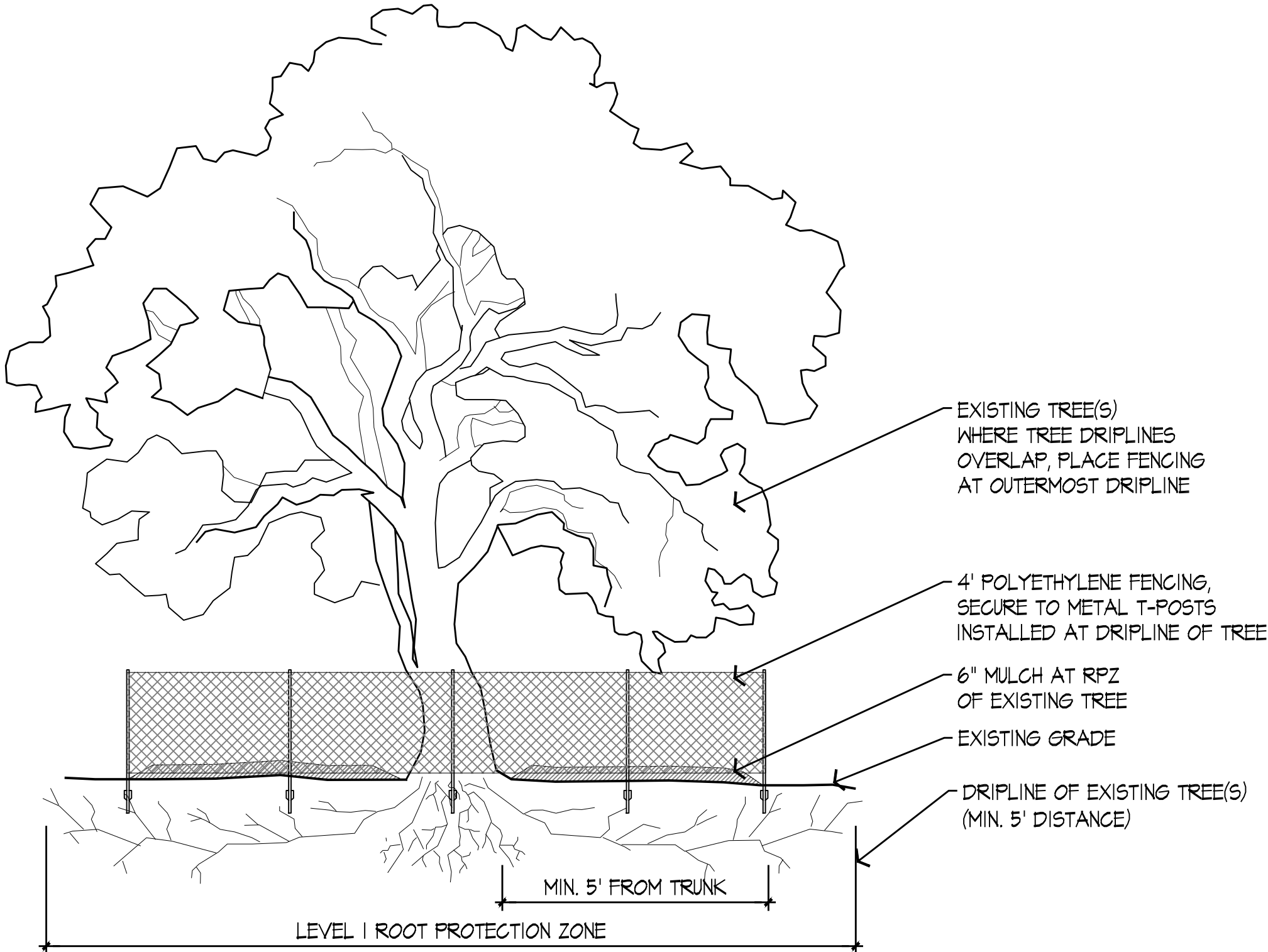
TREE CANOPY MITIGATION OF UPLAND AND ESA PHASE I:

| | |
|-------------------------------|------------------------------------|
| TOTAL AREA OF UPLAND AND ESA: | 308,539.61=34,171.80=422,711.41 SF |
| TREE CANOPY REQUIRED: | 422,711.41X0.25=105,678 SF |
| TREE CANOPY EARNED: | 37,252.50 SF |
| TREE CANOPY BALANCE: | 105,678-37,252.50=68,425.50 SF |
| TREE TOTAL: | 68,425.50/181.5=81 |
| TREE CANOPY CALIPER INCHES: | 81X1.5"=120.50" |
| TOTAL TREE CANOPY MITIGATION: | 120.5"X200.00"=24,100.00" |

*TREE CREDITS CANNOT BE USED FOR TREE CANOPY MITIGATION.



PLAN VIEW

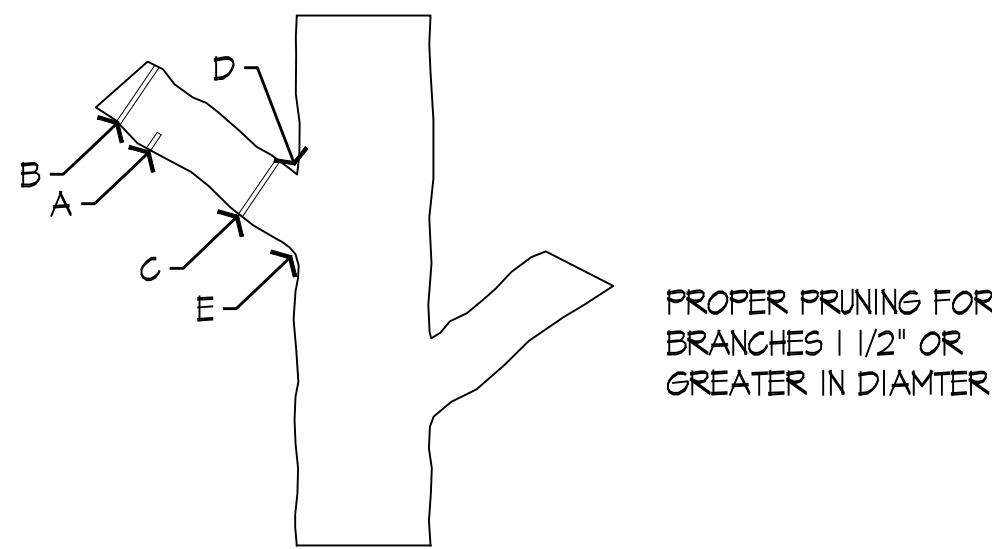


2 RPZ PROTECTION FENCING
DETAIL

Scale: N.T.S.

TREE PROTECTION NOTES:

- ALL TREES SHALL REMAIN UNLESS NOTED ON THE PLANS.
- THE ROOT PROTECTION ZONE (RPZ) IS THE AREA SURROUNDING A TREE, AS MEASURED BY A RADIUS FROM THE TREE TRUNK, IN WHICH NO EQUIPMENT, VEHICLES OR MATERIALS MAY OPERATE OR BE STORED. THE REQUIRED RADIUS LENGTH IS 1 FOOT PER DIAMETER INCH OF THE TREE. FOR EXAMPLE, A 10-INCH DIAMETER TREE WOULD HAVE A 10-FOOT RADIUS ROOT PROTECTION ZONE AROUND THE TREE. ROOTS OR BRANCHES THAT ARE IN CONFLICT WITH THE CONSTRUCTION SHALL BE CUT CLEANLY ACCORDING TO PROPER PRUNING METHODS.
- ALL TREES TO BE PRESERVED SHALL BE PROTECTED AGAINST INJURY OR DAMAGE, INCLUDING SOIL COMPACTION, BREAKING OR SKINNING OF ROOTS, TRUNKS, OR BRANCHES DURING CONSTRUCTION OPERATIONS. A MINIMUM OF 50% OF THE RPZ SHALL BE PRESERVED AT NATURAL GRADE. NO CUTTING, FILLING, TRENCHING, ROOT DISTURBANCE, SOIL DISTURBANCE, OR CONSTRUCTION IMPACTS SHALL OCCUR CLOSER TO THE TRUNK THAN 1/2 THE RPZ RADIUS.
- PROTECT DESIGNATED TREE WITH A TEMPORARY MIN. 4' HT. FENCING. SEE DETAIL 1/L2.01.
- ERECT TEMPORARY FENCING BEFORE COMMENCING SITE PREPARATION WORK. MAINTAIN FENCING DURING FULL CONSTRUCTION PERIOD. REMOVE FENCING ONLY WHEN ALL CONSTRUCTION WORK IS COMPLETED.
- PROTECT ALL EXISTING TREES FROM DISPOSAL OR STORAGE OF CONSTRUCTION MATERIALS OR VEHICULAR PARKING. PROTECT TREES FROM SPREADING OF SPOILED SOIL OVER RPZ.
- INSTALL AND MAINTAIN MINIMUM OF 6" MULCH AT RPZ. SEE DETAIL 1/L2.01.
- REPAIR PRESERVED TREES DAMAGED BY CONSTRUCTION OPERATIONS PER ARBORIST INDUSTRY STANDARDS. ALL BROKEN BRANCHES AND EXPOSED ROOTS OF EXISTING TREES SHALL BE CUT CLEANLY. ALL OAK SPECIES MUST BE PAINTED WITH TREE WOUND DRESSING WITHIN 30 MIN.
- THE CONTRACTOR SHALL AVOID CUTTING ROOTS LARGER THAN THREE INCHES IN DIAMETER WHEN EXCAVATING NEAR EXISTING TREES. EXCAVATION IN THE VICINITY OF TREES SHALL PROCEED WITH CAUTION. THE CONTRACTOR SHALL CONTACT THE CITY INSPECTOR.
- ACCESS TO FENCED AREAS WILL, BE PERMITTED ONLY WITH THE APPROVAL OF THE ENGINEER OR CITY INSPECTOR.
- ANY TREE REMOVAL SHALL BE APPROVED BY THE CITY ARBORIST PRIOR TO ITS REMOVAL.
- TREES, SHRUBS OR BUSHES TO BE CLEARED FROM PROTECTED ROOT ZONE AREAS SHALL BE REMOVED BY HAND AS DIRECTED BY THE PROJECT MANAGER OR CITY INSPECTOR.
- THE PROPOSED FINISHED GRADE AND ELEVATION WITHIN THE RPZ OF ANY EXISTING TREE SHALL NOT BE RAISED OR LOWERED MORE THAN THREE (3) INCHES. FINISHED GRADE AND ELEVATION ABOVE OR BELOW 3" SHALL INCLUDE TREE WELLS/RETAINING WALLS OUTSIDE THE RPZ.
- REPLACE TREES SCHEDULED TO REMAIN THAT ARE REMOVED OR DAMAGED BEYOND REPAIR BY CONSTRUCTION OPERATIONS, AS DETERMINED BY LANDSCAPE ARCHITECT OR CITY REPRESENTATIVE, WITH TREE(S) OF SIMILAR SIZE AND SPECIES. COST FOR TREE REPLACEMENT SHALL BE DETERMINED IN ACCORDANCE WITH THE TREE EVALUATION FORMULA AS DESCRIBED IN "A GUIDE TO THE PROFESSIONAL EVALUATION OF LANDSCAPE TREES, SPECIMEN SHRUBS, AND EVERGREENS" AS PUBLISHED BY THE INTERNATIONAL SOCIETY OF ARBORICULTURE.
- ALL COSTS FOR REPAIR AND REPLACEMENT OF PRESERVED TREES DAMAGED BY CONSTRUCTION OPERATIONS OR LACK OF ADEQUATE PROTECTION DURING CONSTRUCTION SHALL BE ASSUMED BY CONTRACTOR.



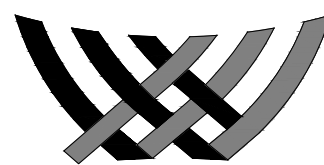
FOR OAKS ONLY
PAINT ALL WOUNDS OR CUTS WITH PRUNING PAINT WITHIN 30MIN. TO PREVENT THE SPREAD OF OAK WILT

- FIRST CUT - TO PREVENT THE BARK FROM BEING PEELED WHEN THE BRANCH FALLS.
- SECOND CUT - TO REDUCE THE WEIGHT OF THE BRANCH.
- FINAL CUT - ALLOW FOR HEALING COLLAR, BUT NO STUBS. INDENT PROPERLY WHICH ARE SITE FOR DECAY.

NOTE: DO NOT CUT FROM D TO E

1 BRANCH PRUNING
DETAIL

Scale: N.T.S.



WEAVER DESIGN STUDIO, LLC.

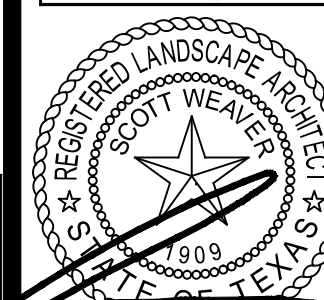
13750 San Pedro, Suite 643
San Antonio, Texas 78232
(p) 210.273.3541
(w) wds-la.com

| No. | REVISIONS | B |
|-----|-----------------|---|
| | review comments | |
| | | |
| | | |
| | | |
| | | |
| | | |



GMS ARCHITECT
1150 Paredes Line Rd
Brownsville TX 78520
(956) 546-0110
fax (956) 546-0196

**IDEA PUBLIC SCHOOLS
HIDDEN MEADOWS PHASE 2
SAN ANTONIO, TEXAS**

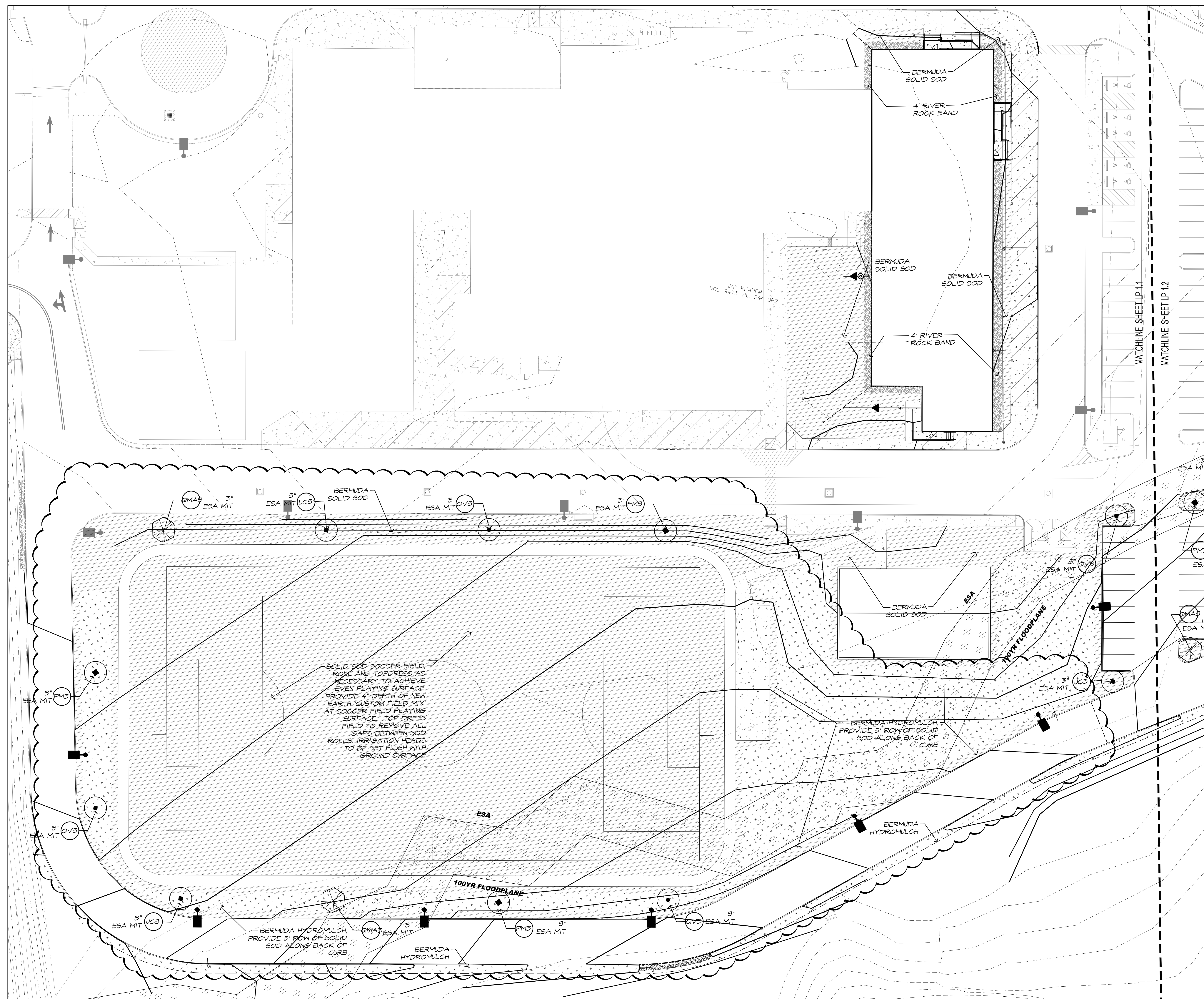


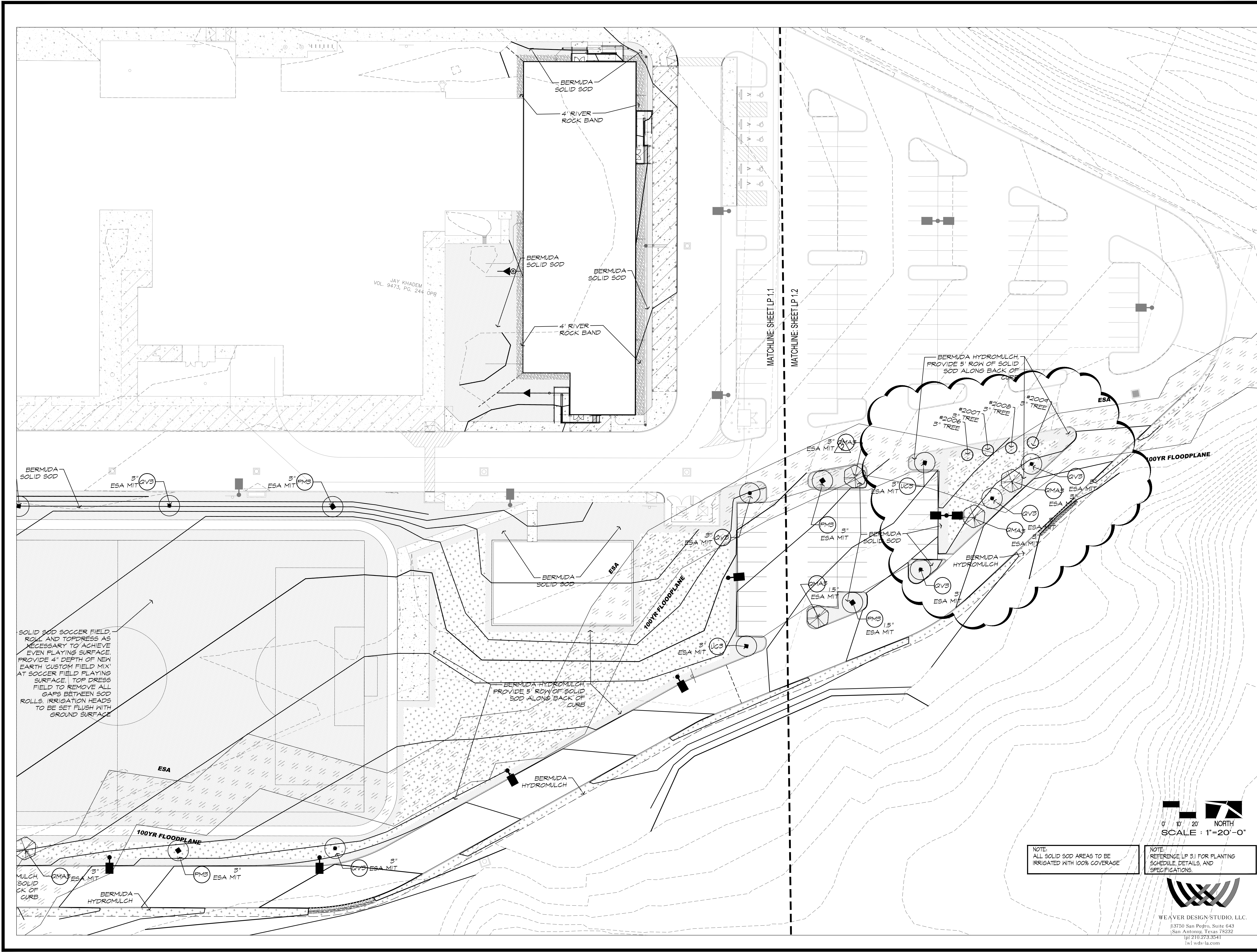
06-30-2021
© Copyright 2021
Gomez Mendez Saenz Inc.
Architects-Planners
Interior Designers

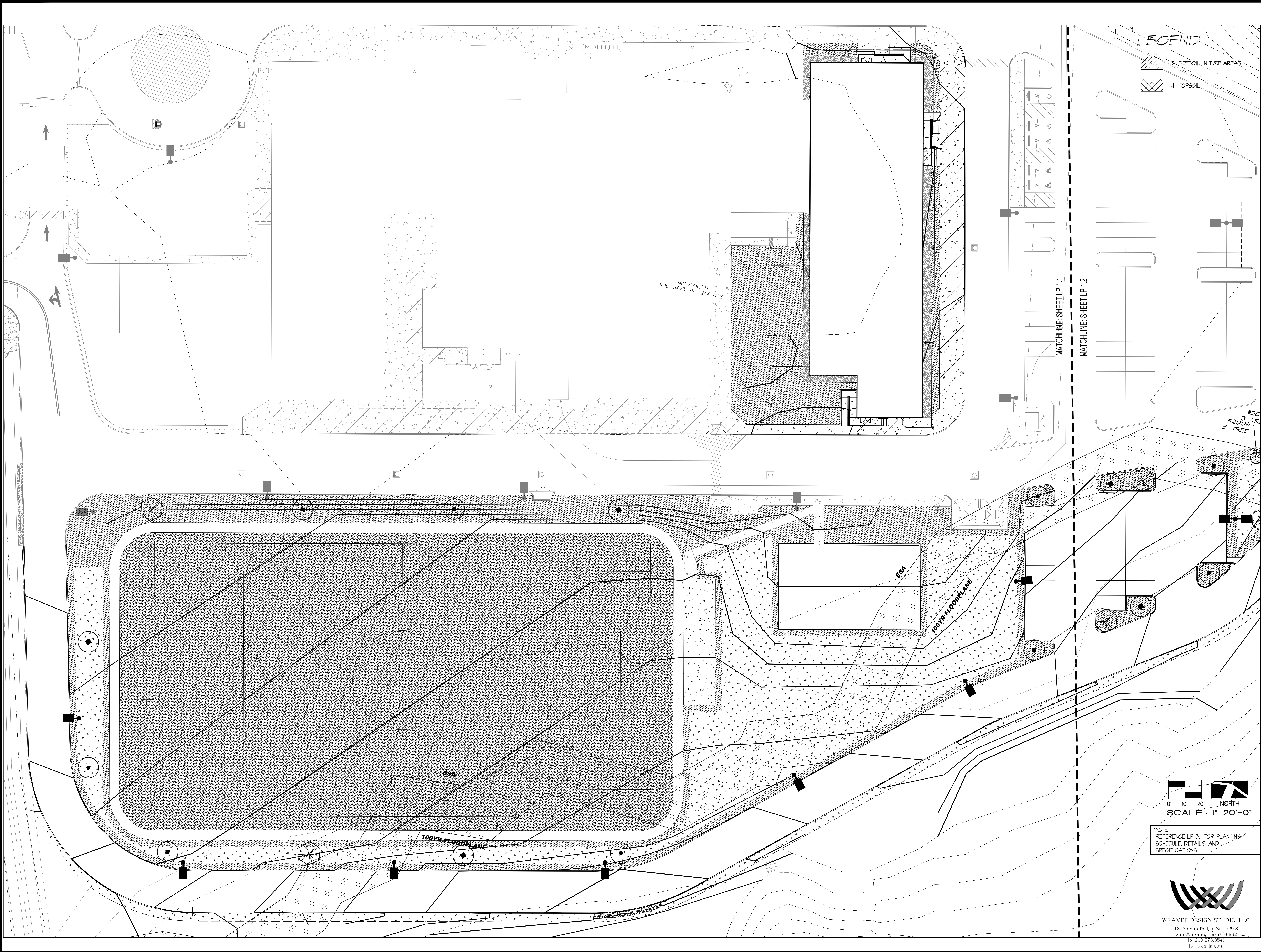
| | |
|--------------------|---------------|
| Date: | 04/202 |
| Scale: | As Not |
| Project Architect: | Roan Gomez, A |
| Drawn By: | |

| | |
|---------|--|
| Job No. | IO, 100 |
| Sheet: | IDEA Phase LANDSCAPE PLANTING PL |

LP 1.5







LEGEND

2" TOPSOIL IN TURF AREAS

4" TOPSOIL

0' 10' 20' NORTH
SCALE : 1"=20'-0"

NOTE: REFERENCE LP 3.1 FOR PLANTING SCHEDULE, DETAILS, AND SPECIFICATIONS.

WEAVER DESIGN STUDIO, LLC.
13750 San Pedro, Suite 643
San Antonio, TX 78222
(210) 273-3541
wds-la.com

| No. | REVISIONS | BY |
|-----|-----------------|----|
| 1 | review comments | |

GMS ARCHITECTS
1150 Paredes Line Rd.
Brownsville TX 78526
(956) 546-0110
fax (956) 546-0196

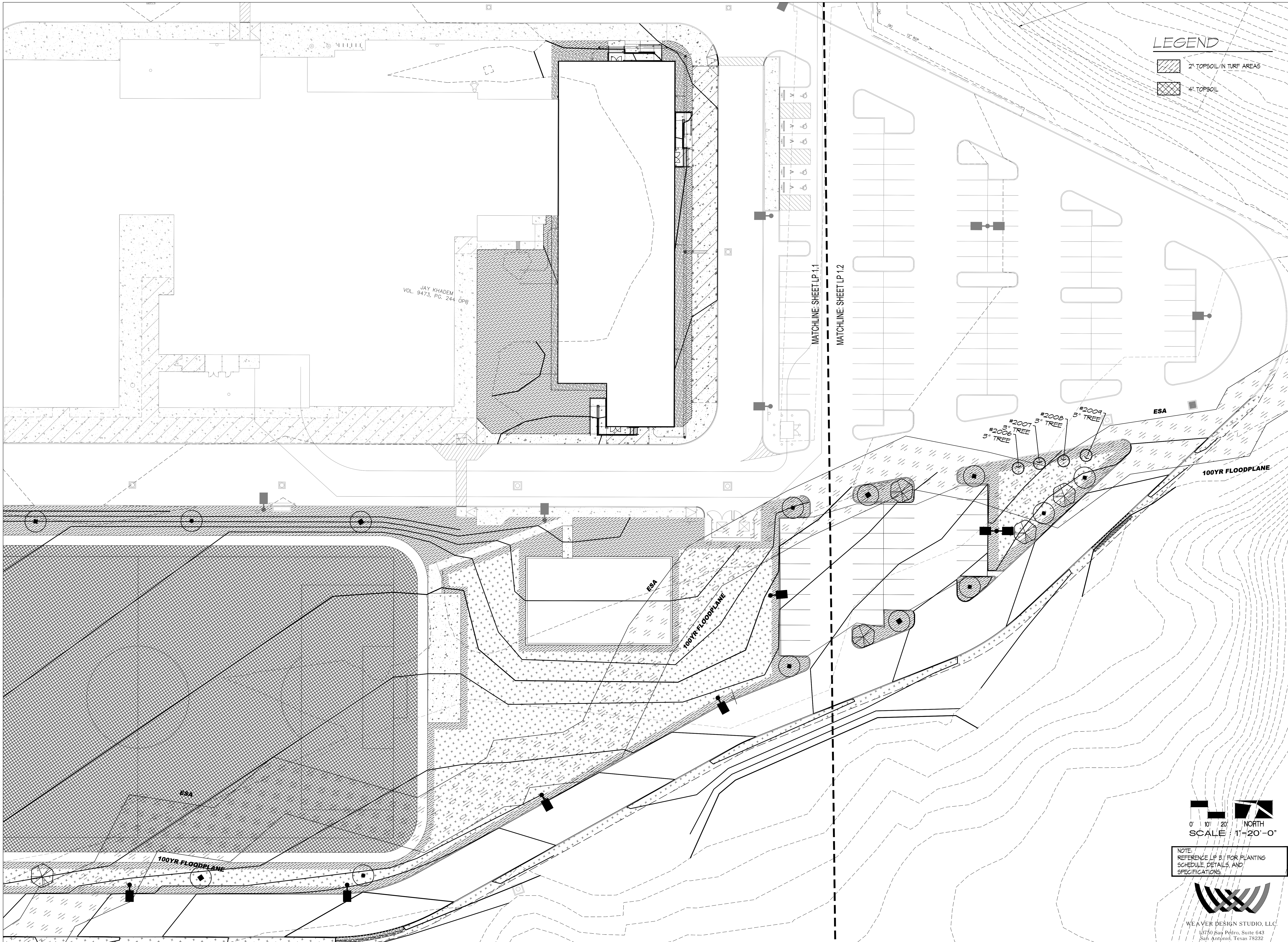
IDEA PUBLIC SCHOOLS
HIDDEN MEADOWS PHASE 2
SAN ANTONIO, TEXAS

IDEA Public Schools

06-30-2021
© Copyright 2021
Gomez Mendez Saez, Inc.
Architects-Planners
Interior Designers

Date: 04/2021
Scale: As Noted
Project Architect: Roan Gomez, AIA
Drawn By: IQ, JA
Job No.: IDEA Phase 2
Sheet: TOPSOIL PLAN

LP 2.1



| No. | REVISIONS | BY |
|-----|-----------------|----|
| 1 | review comments | |

GMS ARCHITECTS
1150 Paredes Line Rd.
Brownsville TX 78526
(956) 546-0110
fax (956) 546-0196

IDEA Public Schools
IDEA PUBLIC SCHOOLS
HIDDEN MEADOWS PHASE 2
SAN ANTONIO, TEXAS

IDEA Public Schools

STATE OF TEXAS
COUNTY OF BEXAR
JAN 1 2021

06-30-2021
© Copyright 2021
Gomez Mendez Saez, Inc.
Architects-Planners
Interior Designers

Date: 04/2021
Scale: As Noted
Project Architect: Roan Gomez, AIA
Drawn By: JO, JA
Job No.: IDEA Phase 2
Sheet: TOPSOIL PLAN

WEAVER DESIGN STUDIO, LLC
13750 San Pedro, Suite 643
San Antonio, Texas 78232
(710) 273-3541
wds-la.com

LP 2.2

PLANTING NOTES:

PART I - GENERAL NOTES
LANDSCAPE CONTRACTOR SHALL ACCEPT THE SITE IN ITS EXISTING CONDITION AND SHALL TIE NEW WORK TO EXISTING CONDITIONS AND CONTROLS (SUCH AS EXISTING GRADES AND WALK ELEVATIONS AS NECESSARY TO MEET THE INTENT OF THE PLANS).

BEFORE PROCEEDING WITH ANY WORK IN AN AREA, LANDSCAPE CONTRACTOR SHALL VERIFY ALL DIMENSIONS, LAYOUTS AND SIZES AND SHALL NOTIFY LANDSCAPE ARCHITECT OF ANY DISCREPANCIES BETWEEN PLANS AND ACTUAL SITE CONDITIONS. IF ANY UTILITIES OR OBSTRUCTIONS ARE DISCOVERED DURING CONTRACT WHICH MAY NOT HAVE BEEN KNOWN DURING DESIGN, CONSTRUCTION SHALL STOP WORK AND LANDSCAPE CONTRACTOR SHALL IMMEDIATELY NOTIFY LANDSCAPE ARCHITECT / OWNER BEFORE PROCEEDING. LANDSCAPE CONTRACTOR SHALL BE LIABLE FOR ALL MODIFICATIONS AND DAMAGE IF WORK PROCEEDS IN EITHER OF THE ABOVE SITUATIONS WITHOUT NOTIFYING LANDSCAPE ARCHITECT / OWNER.

PRIOR TO ANY EXCAVATION, LANDSCAPE CONTRACTOR SHALL CONTACT APPROPRIATE AUTHORITIES INCLUDING, BUT NOT LIMITED TO, TEXAS ONCE CALL SYSTEM AT 1-800-245-4545 TO LOCATE EXISTING UNDERGROUND UTILITIES.

LANDSCAPE CONTRACTOR SHALL BE RESPONSIBLE FOR ALL COSTS ASSOCIATED WITH ANY DAMAGE TO ANY UTILITIES OR PROPERTY THAT MAY OCCUR IN THE EXECUTION OF HIS CONTRACT WORK. WHEN WORK REQUIRES CROSSING EXISTING WALKS OR CURBS WITH EQUIPMENT, LANDSCAPE CONTRACTOR SHALL PROVIDE APPROVED BRIDGE MATERIAL, SUCH AS WOOD PLANKS AND EARTH TO PREVENT DAMAGE TO FINISHED WORK. LANDSCAPE CONTRACTOR SHALL COORDINATE HIS WORK WITH OTHER CONTRACTORS THAT MAY BE WORKING ON THE SITE SIMULTANEOUSLY AND SHALL COORDINATE STAGING OF HIS WORK WITH OWNER AND LANDSCAPE ARCHITECT. ALL TRASH AND DEBRIS GENERATED FROM CONTRACT OPERATIONS SHALL BE REMOVED ON A DAILY BASIS. ALL WORK SHALL BE IN COMPLIANCE WITH ALL APPLICABLE CODES AND ORDINANCES. LANDSCAPE CONTRACTOR SHALL BE RESPONSIBLE FOR JOB SITE SAFETY IN CONJUNCTION WITH HIS CONTRACT WORK.

DELIVERY, STORAGE, AND HANDLING:
A. DELIVER FERTILIZER IN WATERPROOF BAGS SHOWING WEIGHT, GUARANTEED CHEMICAL ANALYSIS, MANUFACTURER AND BRAND NAME.
B. DELIVER PLANT MATERIAL WITH IDENTIFICATION TAG SHOWING BOTANICAL NAME AND PLANT SIZE.
C. DELIVER PLANT MATERIAL IMMEDIATELY PRIOR TO INSTALLATION. PLANT MATERIAL ON SAME DAY AS DELIVERY.
D. KEEP PLANT MATERIAL MOIST AND PROTECTED UNTIL PLANTING.
E. DO NOT HANDLE PLANT MATERIALS BY THE STEM OR TRUNK.
F. KEEP CONTAINERS INTACT UNTIL JUST PRIOR TO PLANTING.

WARRANTIES:
A. FURNISH OWNER WRITTEN WARRANTY THAT PLANT MATERIALS WILL BE IN HEALTHY CONDITION FOR ONE (1) YEAR AFTER FINAL ACCEPTANCE. DAMAGE DUE TO ACTS OF GOD, VANDALISM, OR NEGLIGENCE BY OWNER IS EXCLUDED.
B. REPLACE DEAD, UNHEALTHY AND UNSIGHTLY PLANT MATERIALS WITHIN WARRANTY PERIOD, UPON NOTIFICATION BY OWNER OR LANDSCAPE ARCHITECT.
C. NOTIFY OWNER 30 DAYS PRIOR TO EXPIRATION OF WARRANTY PERIOD AND ARRANGE FINAL ACCEPTANCE INSPECTION BY ALL PARTIES.
1. REMOVE DEAD, UNHEALTHY PLANT MATERIAL
2. REMOVE GUYING AND STAKING MATERIALS
3. WARRANT REPLACEMENT PLANTS UNDER SAME PROVISIONS AND FOR THE SAME PERIOD AS THE ORIGINAL PLANTS

MAINTENANCE:
A. MAINTAIN PLANT LIFE IMMEDIATELY AFTER PLACEMENT AND FOR SIXTY (60) DAYS AFTER FINAL ACCEPTANCE.
B. REPLACE DEAD OR DYING PLANTS WITH PLANTS OF SAME SIZE AND SPECIES SPECIFIED.
C. REMOVE TRASH, DEBRIS, AND LITTER WATER, PRUNE, FERTILIZE, NEED, AND MOW. SPOT APPLY HERBICIDES AND FUNGICIDE ONLY AS REQUIRED.
D. REMOVE CLIPPINGS AND DEBRIS FROM SITE PROMPTLY.
E. COORDINATE WITH OPERATION OF IRRIGATION SYSTEM TO ENSURE THAT PLANTS ARE ADEQUATELY WATERED. HAND WATER AREAS NOT RECEIVING ADEQUATE WATER FROM IRRIGATION SYSTEM.
F. RESET SETTLED PLANTS
G. REAPPLY MULCH TO BARE AND THIN AREAS TO MAINTAIN 4" DEPTH.

MATERIALS:
A. PLANT MATERIALS
1. CERTIFIED IN ACCORDANCE WITH AMERICAN NATIONAL STANDARDS INSTITUTE (ANSI) Z60.1- NURSERY STOCK
2. SPECIES AND SIZE AS INDICATED IN PLANT SCHEDULE. LARGER SIZE MAY BE SUBSTITUTED WITHOUT ADDITIONAL COST TO OWNER.
3. WHERE MATERIALS ARE PLANTED IN MASSES, PROVIDE PLANTS OF UNIFORM SIZE.
4. GROWN IN CLIMATIC CONDITIONS SIMILAR TO THOSE AT SITE. FREE FROM DISEASE, INSECT INFESTATIONS, DEFECTS INCLUDING HEAK OR BROKEN LIMBS, CROTCHES AND DAMAGED TRUNKS, ROOTS OR LEAVES, SUN SCALD, FRESH BARK ABRASIONS, EXCESSIVE ABRASIONS, AND OBJECTIONABLE DISFIGUREMENTS.
5. EXHIBIT NORMAL GROWTH HABITS, VIGOROUS, HEALTHY, FULL, WELL-PROPORTIONED, AND SYMMETRICAL.
6. TREE TRUNKS TO BE STURDY AND EXHIBIT HARDENED SYSTEMS AND VIGOROUS AND FIBROUS ROOT SYSTEMS, NOT ROOT OR POT BOUND.
7. CONTAINER-GROWN STOCK.

B. TOPSOIL
1. USE SITE GENERATED SOIL FROM PLANTING PREPARATIONS, REASONABLY FREE FROM CLAY LUMPS, COARSE SANDS, STONES, ROOTS, AND OTHER FOREIGN MATTER.
2. USE IMPORTED TOPSOIL FROM APPROVED VENDOR SUCH AS NEW EARTH SOILS AND COMPOST (210-661-5180) TO A MINIMUM DEPTH OF 2" IN TURF AREAS.

C. MULCH
1. SHREDDDED, COMPOSTED HARDWOOD BARK OF VARYING LENGTH BY NEW EARTH SOILS AND COMPOST, OR APPROVED SUBSTITUTE, PARTIALLY DECOMPOSED, FREE FROM STICKS, STONES, CLAY, AND GERMINATION INHIBITING INGREDIENTS.

D. TURF
1. SOD: PROVIDE FULL, DARK GREEN, UNIFORM, STRONGLY ROOTED SOD IN 16"x34" STRIPS FREE FROM WEEDS, UNDESIRABLE GRASSES, DISEASES AND PESTS. SOD SHALL BE CUT FROM THE FIELD NO LONGER THAN 48 HOURS PRIOR TO PLANTING. ROOTS OF SOD SHALL BE KEPT MOIST.
2. HYDROSEEDING: ALL SEED USED SHALL BE HIGH QUALITY, EXTRA FANCY, TREATED LAWN TYPE SEED AT 98% PURITY AND 88% GERMINATION AND SHALL BE FURNISHED IN A SEALED STANDARD CONTAINER WITH SIGNED COPIES OF A STATEMENT FROM THE VENDOR CERTIFYING THAT EACH CONTAINER OF SEED DELIVERED IS FULLY LABELED IN ACCORDANCE WITH THE TEXAS STATE AGRICULTURAL CODE AND IS EQUAL TO OR BETTER THAN THE REQUIREMENT OF THESE SPECIFICATIONS. LAWN SEED TO BE FREE OF WEEDS OR NOXIOUS GRASS SEEDS.
- SEED WHICH HAS BECOME WET, MOLDY OR OTHERWISE DAMAGED IN TRANSIT OR STORAGE WILL NOT BE ACCEPTED.
- GRASS SEED SCHEDULE:
APRIL 15 - SEPTEMBER 15 SHALL BE COMMON BERMUDA
SEPTEMBER 15 - APRIL 15 SHALL BE ANNUAL RYE GRASS
-HYDRO-MULCH- AS MANUFACTURED BY CONVED, OR APPROVED EQUAL
-THE HYDRO-MULCH SHALL BE COMPOSED OF WOOD CELLULOSE FIBER AND CONTAIN NO GERMINATION OR GROWTH INHIBITING FACTORS.
-HYDROSEEDING ADDITIVE (BINDER): ECOLOGY CONTROL-N BINDER ORGANEIC SEEDING ADDITIVE

E. TREES
1. BRACING: TREES SHALL BE STAKED AS PER DETAILS OR APPROVED SUBSTITUTE.
2. TREE PAINT: MORRISON TREE SEAL, CABOT TREE PAINT, OR OTHER PRODUCT APPROVED BY LANDSCAPE ARCHITECT.

F. EDGING
1. PLANTER BED EDGING SHALL BE 3/16" X 4" STEEL EDGING WITH MANUFACTURER'S STANDARD GREEN FINISH, UNLESS OTHERWISE NOTED IN PLANS.

G. MIXES
1. PLANT BED MIX: MINIMUM 6" DEPTH PLANT BED MIX (BACKFILL MIX) SHALL BE NEW EARTH'S 4-WAY MIX AS PRODUCED BY NEW EARTH LLC (PH. 210-661-5180). DOCUMENTATION OF THIS PURCHASE SHALL BE PROVIDED TO LANDSCAPE ARCHITECT. IF EQUAL IS PROPOSED, CONTRACTOR MUST SUBMIT SAMPLE AND COMPLETE ANALYSIS WITH TEST RESULTS AND METHOD OF PRODUCTION FOR EVALUATION AS AN EQUAL SUBSTITUTE.

PART 2 - EXECUTION

PREPARATION
LANDSCAPE CONTRACTOR SHALL RECEIVE SITE AT APPROXIMATELY FINISH GRADE LESS ANY SETTLEMENT THAT MAY HAVE OCCURRED SINCE SITE CONSTRUCTION AND BACKFILLING. THIS GRADE SHALL BE RAKED TO REMOVE ALL DEBRIS INCLUDING STICKS, GLODS, AND STONES AND SHALL BE FINE GRADED TO ELIMINATE ALL HUMPS, RUTS, DEPRESSIONS AND ABRUPT CHANGES IN GRADE OR ANY AREA THAT COULD CAUSE WATER TO POND.
1. IF VEGETATION IS GROWING IN PLANTING/LAWN AREAS, APPLY HERBICIDE AT RATES RECOMMENDED BY MANUFACTURER, ALLOW TO DIE, AND THEN GRUB OUT ROOTS TO MINIMUM 1/2" DEPTH.
2. MARK LOCATION OF TREES AND OUTLINES OF PLANT BEDS USING COLORED WOOD STAKES OR FLAGS PRIOR TO BEGINNING PLANTING; OBTAIN APPROVAL FROM LANDSCAPE ARCHITECT PRIOR TO PROCEEDING.

TREE AND SHRUB PLANTING (SEE DETAILS):
A. REMOVE CONTAINERS WITHOUT DAMAGE TO ROOTS.
B. REMOVE BOTTOM OF PLANT BOXES PRIOR TO PLACING PLANTS; REMOVE SIDES AFTER PLACEMENT AND PARTIAL BACKFILLING. PREVENTS DAMAGE TO ROOTS.
C. REMOVE UPPER THIRD OF BURLAP FROM BALLED AND BURLAP TREES AFTER PLACEMENT.
D. PLACE PLANT UPRIGHT AND PLUMB IN CENTER OF HOLE. FULL ANY WEEDS GROWING IN TREE BALL AND EXPOSE ROOT FLARE (TOP OF MOST IDENTIFIABLE ROOT); REMOVE ANY GIRDLING ROOTS AND SET PLANT SO THAT ROOT FLARE IS 2" ABOVE FINISH GRADE. ORIENT PLANTS PRO BEST APPEARANCE. BACKFILL THE BOTTOM 2/3 OF THE EXCAVATION WITH SOIL, CUT FROM FROM EXCAVATION OF PIT AND THOROUGHLY WATER THIS SOIL TO SETTLE IN. BACKFILL THE REMAINDER OF THE EXCAVATION WITH A 50/50 MIX OF NEW EARTH'S 4-WAY MIX AND NATIVE SOIL EXCAVATED FROM THE PIT. PLACE PLANT HEALTH CARE GROUP'S "TREE SAVING" IN BACKFILL. AS PER P.L.C.G. DIRECTION AND APPLICATION RATES, LIGHTLY TAMPS AND WATER SOIL TO REMOVE ALL AIR POCKETS FROM PLANTS OUTSIDE OF PLANTING BEDS; CONSTRUCT 3 INCH HIGH WATER CONTAINMENT RING AROUND PLANT. SPREAD MULCH TO MINIMUM 4" DEPTH OVER PLANT BASIN.
E. ADJUST PLANT HEIGHT IF SETTLEMENT OCCURS AFTER BACKFILL AND STAKE AS DETAILED.
1. TWO TO THREE WEEKS FOLLOWING PLANTING, INJECT PLANT HEALTH CARE INJECTABLE INOCULATE AROUND ROOT BALL FOLLOWING MANUFACTURER'S DIRECTIONS AND APPLICATION RATES. CONTACT LANDSCAPE ARCHITECT TO OBSERVE THIS OPERATION.
F. TRIM PLANTS TO REMOVE DEAD AND INURED BRANCHES ONLY. TREAT CUTS OVER 3/4 INCH DIAMETER WITH TREE PAINT (OAKS ONLY).
G. BRACE PLANTS OVER 65 GALLONS SIZE IMMEDIATELY AFTER PLANTING:
1. FOR TREES 2" CALIPER AND GREATER, PROVIDE STAKING AS DETAILED. POSITION TO PREVENT HAZARDS TO PEDESTRIANS.
2. DO NOT RESTRICT PLANT MOVEMENT UNDER LIGHT WIND LOADS OR DAMAGE BARK.

MASS SHRUB, GROUNDCOVER, AND ANNUAL PLANTING (SEE DETAILS):
A. EXCAVATE PLANT ED TO DEPTH AS DETAILED ON PLANS.
B. BACKFILL WITH SPECIFIED 4-WAY MIX AND TILL IN SPECIFIED PLANT HEALTH CARE'S 'HEALTHY START 5-4-3' AT A RATE OF 25 LBS. PER CUBIC YARD.
C. INSTALL METAL EDGINGS TO SEPARATE ALL PLANTER BEDS FROM TURF AND AT LOCATIONS INDICATED ON PLANS.
D. PLACE PLANTS IN STRAIGHT, EVENLY SPACED ROWS AT SPACING INDICATED ON DRAWINGS, TO UNIFORMLY FILL BEDS. USE TRIANGULAR SPACING METHOD UNLESS OTHERWISE INDICATED ON PLANS.
E. WATER PLANTS THOROUGHLY IMMEDIATELY AFTER PLANTING. REPAIR SETTLED AREAS.
F. ADJUST FINAL GRADES TO 1/2 INCH BELOW ADJACENT PAVING CURBS.
G. SPREAD MULCH TO MINIMUM 4" DEPTH OVER PLANTING AREAS.





CLEANING AND ADJUSTING:
A. REPAIR RUTS, HOLES AND SCARS IN GROWING SURFACE. PROVIDE POSITIVE DRAINAGE IN ALL AREAS.

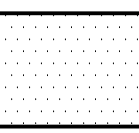
LAWN APPLICATION:
A. COORDINATION
1. HYDRO-MULCH AND SOD AFTER TREE, SHRUB AND GROUNDCOVER INSTALLATION IS COMPLETE.
2. CONTRACTOR TO COORDINATE WITH IRRIGATION CONTRACTOR TO ENSURE FUNCTIONAL IRRIGATION SYSTEM PRIOR TO ANY LAWN INSTALLATION.
B. PREPARATION
1. PRE-PLANT WEED CONTROL - IF WEEDS EXIST WITHIN PROPOSED TURF AREAS AT THE BEGINNING OF WORK, SPRAY WITH A NON-SELECTIVE SYSTEMIC CONTACT HERBICIDE, AS RECOMMENDED AND APPLIED BY AN APPROVED LICENSED APPLICATOR. CLEAR AND REMOVE THESE EXISTING WEEDS UPON HERBICIDE'S COMPLETED ACTION BY GRUBBING OFF ALL PLANTS AT LEAST 1" - 1 1/2" BELOW SURFACE OF THE SOIL.
2. CONTRACTOR TO SCARIFY GROUND SURFACE TO A MINIMUM OF 2" DEPTH FOR ALL GRASSES AND REMOVE ALL STICKS, TRASH, ROCKS, AND OTHER DEBRIS AND DISPOSE OFF SITE.
3. IF EXISTING SOIL IN AN AREAS IS FOUND TO BE CONTAMINATED OR OTHERWISE UNSUITABLE, CONTRACTOR SHALL PROVIDE COST PER CUBIC YARD TO REPLACE WITH SOIL SUITABLE FOR TURF.
4. CONTRACTOR TO RAKE ENTIRE AREA, LEVELING ANY IMPERFECTIONS IN THE GRADE. LANDSCAPE CONTRACTOR TO ENSURE THAT THERE WILL BE POSITIVE DRAINAGE AND NO PONDING ON SITE. FINISHED GRADE OF LAWN AREAS TO BE 1/2" BELOW TOP OF CURBS, SIDEWALKS, AND OTHER PAVEMENTS. REMOVE ANY LARGE (GREATER THAN 1") DIRT GLODS, ROCKS, AND TRASH AND PREPARE A SMOOTH LEVEL, LOOSE AND COARSE SURFACE. LANDSCAPE ARCHITECT TO APPROVE FINE GRADING PRIOR TO ANY LAWN INSTALLATION. LAWN BED SHALL BE MOIST (BUT NOT MUDDY) TO RECEIVED SEED AND SOD.
C. SOD INSTALLATION
1. INCORPORATE SPECIFIED LAWN FERTILIZER AT SEVEN (7) POUNDS PER 1000 SQUARE FEET OF LAWN AREA FOR SOD.
2. PRE-EMERGENT HERBICIDE APPLICATION: APPLY RECOMMENDED HERBICIDE TO LABEL INSTRUCTIONS IN TWO APPLICATIONS. THE FIRST APPLICATION WILL BE UP TO 10 DAYS PRIOR TO PLANTING. THE SECOND APPLICATION WILL BE 5 DAYS PRIOR TO PLANTING. USE CARE TO AVOID WIND DRIFT OR RUNOFF TO ADJACENT ORNAMENTAL TREE OR SHRUB PLANTINGS.
3. LAY SOD WITHIN 24 HOURS FROM TIME OF STRIPPING.
4. LAY SOD TO FORM SOLID MASS WITH TIGHTLY FITTED JOINTS. BUTT ENDS AND SIDES OF SOD STRIPS. STAGGER STRIPS TO OFFSET JOINTS IN ADJACENT COURSES. WORK SIFTED SOIL INTO MINOR CRACKS BETWEEN PIECES OF SOD; REMOVE EXCESS SOD TO AVOID SMOOTHERING ADJACENT GRASS.
5. SOD PADS SHALL BE OF FULLEST SIZE POSSIBLE. NO SOD SLIVERS WILL BE PERMITTED.
6. FINISHED GRADE OF NEW SOD SHALL BE FLUSH WITH ADJACENT LAWN AND PAVEMENT. ENSURE POSITIVE DRAINAGE IN ALL AREAS.
7. ROLL ENTIRE SODDED AREA WITH SOD ROLLER. WATER SOD THOROUGHLY.
8. CONTRACTOR SHALL OVER SEED SOD AREAS WITH ANNUAL RYE GRASS IF LAWN INSTALLATION OCCURS SEPTEMBER 15 THROUGH APRIL 15 AT 8 LBS. PER 1000 SQUARE FEET.
9. SHOULD LAWN AREAS BE SEEDDED WITH ANNUAL RYE GRASS, THE CONTRACTOR SHALL RETURN TO THE SITE BETWEEN APRIL 15 AND MAY 15 TO RE-PREPARE FOR SODDING.
D. HYDROSEED INSTALLATION
1. FOR ALL HYDROSEED AREAS, INSTALL SOD STRIPS OF BERMUDA GRASS AT ALL BACKS OF CURBS WITHIN THE LIMITS OF CONSTRUCTION.
2. LAWN AREAS TO BE SEEDDED IMMEDIATELY AFTER PREPARATION OF THE BED, APPLY A UNIFORM COAT OF HYDROSEED AT THE RATES SPECIFIED BELOW
- BERMUDA (MULLED) - 2 LBS. / 1000 SQUARE FEET
- ANNUAL RYE GRASS - 8 LBS. / 1000 SQUARE FEET
- WOOD CELLULOSE FIBER MULCH - 80 LBS. / 1000 SQUARE FEET
- FERTILIZER: "PHG FOR TURF" AT A RATE OF SEVEN (7) LBS. / 1000 SQUARE FEET
- INCORPORATE A TACKIFIER WITH MULCH CAP. DELAY IRRIGATION 8 HOURS TO PERMIT TACKIFIER TO SET.
3. SEED AREAS WITHIN SEEDING LIMITS INDICATED ON THE PLAN AND AREAS DISTURBED BY CONSTRUCTION OPERATIONS.
4. IMMEDIATELY FOLLOWING APPLICATION OF HYDROSEED, THE CONTRACTOR SHALL WASH EXCESS MATERIAL FROM PREVIOUSLY PLANTED MATERIAL, ARCHITECTURAL FEATURES, ETC.
5. UPON ESTABLISHMENT OF LAWN, APPLY A POST-EMERGENT HERBICIDE FOR CONTROL OF NUT GRASS AND WEEDS. FERTILIZE AT 45 DAY INTERVALS WITH SPECIFIED PHG FERTILIZER AT A RATE OF SEVEN (7) LBS. / 1000 SF DURING THE 60 DAY MAINTENANCE PERIOD.
6. SHOULD LAWN AREAS BE SEEDDED WITH ANNUAL RYE GRASS, THE CONTRACTOR SHALL RETURN TO THE SITE BETWEEN APRIL 15 AND MAY 15 TO RE-PREPARE SEED BED AND HYDROSEED WITH COMMON BERMUDA SEED IN ORDER TO ESTABLISH A PERMANENT TURF COVER IN ALL LAWN AREAS.

ACCEPTANCE:
A. PRIOR TO SCHEDULING A SUBSTANTIAL COMPLETION INSPECTION, LANDSCAPE CONTRACTOR SHALL THOROUGHLY CLEAN SITE OF ALL DEBRIS AND TRASH AND REPAIR ANY DAMAGE TO FINISH GRADE. WHEN LANDSCAPE WORK IS COMPLETE, A SUBSTANTIAL COMPLETION INSPECTION WILL BE HELD FOLLOWING COMPLETION OF ANY PUNCH LIST ITEMS GENERATED FROM THE SUBSTANTIAL COMPLETION INSPECTION. A FINAL INSPECTION WILL BE HELD AND, IF FOUND ACCEPTABLE, A CERTIFICATE OF FINAL ACCEPTANCE WILL BE ISSUED.
B. LANDSCAPE CONTRACTOR SHALL CONTINUE MAINTENANCE UNTIL FINAL ACCEPTANCE, AT WHICH TIME THE SPECIFIED MAINTENANCE PERIOD WILL BEGIN.

PROJECT:
ISSUE SET - MONTH DAY, 2017

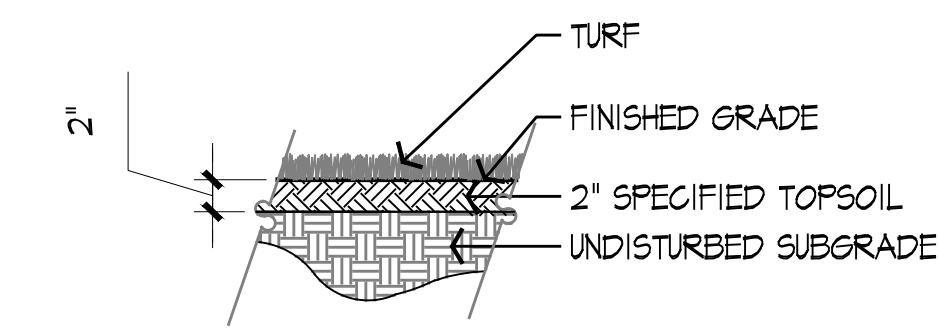
PLANT SCHEDULE

| SHADE TREES | | | | | | |
|---|--|------|---------|---------|----------|--|
| KEY | COMMON NAME Botanical Name | SIZE | HEIGHT | SPREAD | COMMENTS | |
|  | MEXICAN SYCAMORE <i>Platanus mexicana</i> | | 3" CAL. | 13'-14' | 5'-7' | SELECT, STANDARD, B&B FULL, SYMMETRICAL CANOPY |
|  | BURR OAK <i>Quercus macrocarpa</i> | | 3" CAL. | 12'-13' | 5'-6' | SELECT, STANDARD, B&B FULL, SYMMETRICAL CANOPY |
|  | LIVE OAK <i>Quercus virginiana</i> | | 3" CAL. | 12'-13' | 6'-8' | SELECT, STANDARD, B&B FULL, SYMMETRICAL CANOPY |
|  | CEDAR ELM <i>Ulmus crassifolia</i> | | 3" CAL. | 11'-13' | 6'-7' | SELECT, STANDARD, B&B FULL, SYMMETRICAL CANOPY |

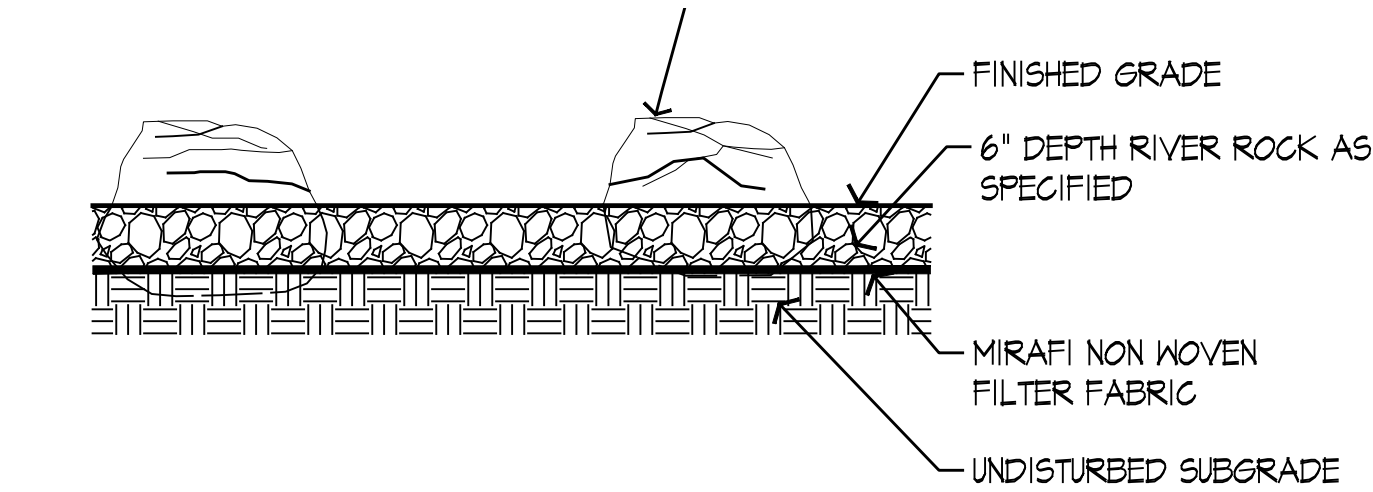
| LAWN | | | |
|---|---|-----------|--|
| KEY | COMMON NAME Botanical Name | SIZE | COMMENTS |
|  | COMMON BERMUDA <i>Cynodon dactylon</i> | SOLID SOD | CONTRACTOR TO FIELD VERIFY QUANTITY OF LAWN REQUIRED |

NOTE:
CONTRACTOR TO VERIFY PLANT QUANTITIES REQUIRED TO CARRY OUT DESIGN INTENT AS INDICATED ON PLANS

ALL AREAS DISTURBED BY CONSTRUCTION ACTIVITIES SHALL BE RE-VEGETATED TO PRE-CONSTRUCTION CONDITIONS UNLESS OTHERWISE NOTED ON PLANS




2 TURF AND TOPSOIL PROFILE
SECTION Scale: N.T.S.



1 RIVER ROCK
SECTION Scale: N.T.S.

No. REVISIONS BY

1 review comments



GMS ARCHITECTS

1150 Paredes Line Rd.
Brownsville TX 78526
(956) 546-0110
fax (956) 546-0196

IDEA PUBLIC SCHOOLS

HIDDEN MEADOWS PHASE 2

SAN ANTONIO, TEXAS



IDEA Public Schools



06-30-2021

© Copyright 2021

Gomez Mendez Saenz Inc.

Architects-Planners

Interior Designers

Date: 04/2021

Scale: As Noted

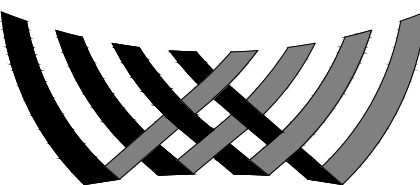
Project Architect: Roan Gomez, AIA

Drawn By: IO, JA

Job No. IDEA Phase 2

Sheet: LANDSCAPE SPECIFICATIONS

CALCULATIONS AND DETAILS



WEAVER DESIGN STUDIO, LLC.
13750 San Pedro, Suite 643
San Antonio, Texas 78232
lp 210.273.3541
wv wds-ls.com